

The Harry S. Bovay Scout Ranch



2011 Leader Guide- Resident Camp

Sam Houston Area Council
Boy Scouts of America

Table of Contents

General Camp Information

About Bovay Scout Ranch

Mission Statement

Bovay Scout Ranch Prayer and Song

Camp Program

Cub Scout Camping Guidelines

Program Offered at Camp

Belt Loops and Pins

Specialized Achievements, Awards, Activities

Evening Activities

Colonneh Lodge Chapel

Health Lodge

Medical Services

Insurance

2012 Camp Information

Wildlife Guide

Dear Scouter,

Welcome to the NEW Bovay Scout Ranch.

Our objective is to provide a unique experience for Cub Scouts and their families in the Sam Houston Area Council. To promote all aspects of the Cub Scout Outdoor Camping Program and accentuate the activities only permitted on council property. The Cub Scout Camping Program is designed to enhance the Cub Scout experience, not replace activities at the Den and Pack level. Each scout and their family will be treated like a cherished friend. We will exceed their expectations and give them the best camping experience of their lives.

Our Program has changed dramatically. Each Scout will receive a Passport to Adventure upon arriving at Camp. Parents will now have a tangible record of what their scout has achieved during camp and will also catch a glimpse of what is in store for the coming years. Lost your passport? No worries, we have plenty in the Trading Post.

If you have any questions, please feel free to contact the Camp Director Brandylee Marsh at scoutprincess@me.com.

Thank you for choosing The Bovay Scout Ranch summer camp.

See ya at the Ranch,

Brandylee Dawson Marsh

Brandylee Dawson Marsh
Camp Director

About Bovay Scout Ranch

Located just 3 miles south of downtown Navasota, Bovay Scout Ranch was donated by Mr. Harry E. Bovay, Jr. Bovay offers each visitor an opportunity to experience the wonder and beauty of Central Texas' rolling hills and lakes, where Huisache and Bois-d'arc trees surround campsites and the sunsets are breath taking. The entire 1498 acres are a natural



paradise for plants and wildlife. Bovay Scout Ranch has facilities for a wide range of activities including a water park, traverse wall and Cub Scout and Webelos Shooting Range. All campsites are equipped with restrooms and hot showers, potable drinking water, and a lighted covered pavilion with 5 picnic tables. Each campsite also has a fire ring and flag for use during camp.

Mission Statement

The Bovay Scout Ranch is committed to training all youth in the methods and purpose of Cub Scouting. Youth will learn about Frontier life, experience nature, and participate in activities that build knowledge and consideration for the outdoors and Cub Scouting, while strengthening self-sufficiency and teamwork. It is our belief, outdoor skills are the foundation for character development and growth. We aim to inspire laughter, promote environmentalism, develop Scout skills, and create lifelong memories and friendships.

Bovay Scout Ranch Prayer

For the trees, lakes and hills
We Thank Thee O God
For the fun, friends, and fellowship,
We Thank Thee O God
For the food that has been prepared
We Thank Thee O God

Bovay Scout Ranch Song

Bovay Scout Ranch
Both Scouts and Staff alike
Can Swim and run and have some fun
And then they ride the bikes!
Paddle boats, pellet guns and an Oil Derrick Too!
Hills and lakes and trees and snakes...
Camp Bovay we love you.

Camp Program



Resident Camp
The Passport to Adventure
Take your Passport to every activity and earn stamps. Scouts earn advancement stamps at all Program Areas, but there are also special Stamps like the Buddy Stamp, Citizenship Stamp, Reverence Stamp for special participation.



Advancement Plan
Although, resident camp is typically not advancement based, we have intentionally chosen outdoor skills that qualify for advancement. Please note that if you chose to skip a program area your scouts will be missing those achievements,



What about Inclement Weather?
If the weather doesn't cooperate with us, don't worry we will move activities indoors. Look for exciting and innovative rainy day activities. Check your Leader Guide for Inclement Weather Locations and Shelter in Place

Camp Fees

Cub Scout Resident Camp

Council

Early Bird \$115

Late \$125

Non-Council

Early Bird \$115

Late \$125

Weekend Family Camping

Council \$40

Non-Council \$40

Pack Outing- per person

Council- \$2.00

Non-council- \$3.00

Program Fees

These fees are for Pack Outing weekends and other reservations. Look for more information to come in September 2011 about all the exciting new program enhancements you can add onto your Pack's pre-planned program.

Weekend Family Camping

September 23-25

September 30- Oct. 2

October 15-16

October 29-30

November 4-6

November 11-13

November 18-20

Pack Outings

September 16-18

October 7-9

December 2-4

December 11-13

Registration

The goal of the registration process is to help campers and staff make accurate plans for camp. This guide contains all the forms and information necessary to register for Cub Scout Camping at the Bovay Scout Ranch.

1. Camp Application

Packs should submit the summer camp reservation form found on page____. This form includes leader contact information, campsite preference, and estimated number of campers. Space is reserved with the inclusion of a deposit.

2. Advance Payment

The Final payment to lock in early bird pricing, guarantee your t-shirt, patch and campsite if you selected it

3. Forms

All forms are due two weeks prior to camp starting.

Council Refund Policy

The following policy statement is applicable to all council and district activities where a fee is collected by the Sam Houston Area Council, Boy Scouts of America

1. All refund requests will only be considered if made in writing.
2. Prior to the activity taking place, a service charge of twenty-five percent (25%) of the activity fee plus and non-refundable deposits will be assessed on all refunds to cover the costs incurred in preparation of the activity and processing the refund.
3. Written refund requests submitted after the activity will be considered only for personal illness or family emergencies. No refund requests will be accepted after ten (10) days following the end of the activity.
4. Consideration for a full refund will be considered for special hardship cases.
5. Refunds to checks or credit cards will be issued to the individual or entity paying the original fee within 30 days of receipt of the request pending its approval.
6. Unit paid fees are only transferable within the same unit to a Scout or adult leader not currently registered for that specific activity.
7. If an activity is canceled or postponed and the participant cannot participate during the alternate date, the full fee will be refunded.
8. For major activities that require a non-refundable deposit, such as council contingents to the National Jamboree, Philmont and summer camp, a full refund less the non-refundable deposit and any contractual agreements signed at the time of the request and the Council's ability to fill the slot with another participant will be considered.

This refund policy became effective on August 1, 2008

Adult Orientation Meeting

On the first day of camp, at 3 pm in the Dining Hall, we will conduct an Adult Meeting. Every adult is expected to attend this meeting. Your children will go listen to their Archery and BB Safety Talks and have their swim checks during this meeting. Our staff including your Campsite Host will be walking around with the boys as their “Den Leaders” while you are receiving vital information about the daily happenings at camp, emergency Procedures, and Question and Answer time. In order to earn the Honor Campsite Award and the Honor Pack Award all adults must attend.

Campsites

All of our campsites have canvas tents on concrete platforms. These range in number from 4-9. The list below shows the campsites number with the number of tents available. Any tent modifications that need to be made to tents and tent platforms to conform to special needs should be turned into the program office so proper accommodations can be made. Each platform has one tent that holds 2 people on cots comfortably. If the campsite doesn't have enough tents for your unit, your are encouraged and welcomed to bring your own tents. Cots are not provided in your registration fee, however you may rent them for \$5.00 from the Trading Post upon arrival (if available).

Campsites with Tents Available

Road A

1 9 tents

2 5 tents

3 4 tents

4 5 tents

5 4 tents

6 4 tents

7 5 tents

8 9 tents

9 9 tents

10 4 tents

Road B

11 5 tents

12 5 tents

13 4 tents

14 5 tents

15 4 tents

16 8 tents

17 4 tents

18 4 tents

19 9 tents

20 9 tents



Arrival Time

For Resident Camp, units should arrive by 2 pm and no later than 2:45. This will ensure that all logistics surrounding check-in are taken care of. If a unit requires late check-in, please contact the Camp Director. The Adult Meeting and the Scouts safety checks will start at 3 pm.

For Weekend Family Camping, units should arrive no later than 9:30 am to ensure check-in by the 11:00 Adult Meeting.

For Pack Outings, arrival is determined by the Pack. Please note the gates will close by 10 pm and you must check in with the ranger to receive your parking pass and submit your roster.

Check In Procedures

When you get to your campsite, there will be a Campsite Host to greet you and help you with your check-in procedures.

- * Check your roster with your campsite host to make sure we have a correct list of who is in camp.
- * Set up your campsite as needed:
- * Unload your gear.
- * Verify that you have all you need for your stay.
- * If you need more cots, please notify your campsite host. You can pay for them at the trading post.
- * Do a tent and cot inspection in order to insure you are not charged for any prior damages.

Once everyone in your Pack has arrived, **and** has checked in, your host will escort

you to the medical office for a health screening.

Safety talks and swim checks will take place from 3:00 p.m. to 5:00 p.m. at the Dining Hall and the Water Park. Everyone will be checked for swimmer or non-swimmer status. The Shooting Sports safety talks will be in the Dining Hall. Attendance is mandatory. Scouts will receive beads on their campsite flags denoting completion of swim check, Archery and BB safety talks.

The leaders meeting will take place at **3:00pm** in the Safari Room at the headquarters building.

All adult leaders and parents must attend.

You will meet the key staff, learn more about what to expect at camp and have an opportunity to ask any questions you might have.

Check Out Procedures

Your Campsite Host will arrive in your campsite to assist you in checking out. Please let them know ahead of time what specific time you will be ready to leave so they will be prompt.

Prior to the arrival of the campsite host:

- * Pick up trash around the campsite. Place in trash cans in Campsite.
- * Close tents, let all flaps down. DO NOT TIE FLAPS CLOSED.
- * Sweep bathrooms and surrounding areas.
- * Leave your cots in your tent.
- * Fill out evaluations and Camper Surveys.

Campsite Host will need to collect the Campsite Notebook from you at check out. Leave all materials in the notebook for the next campers. Remember to take your personal papers, if any, from the notebook.

When the campsite host arrives, he/she will go through a checklist with campsite leaders.

When checkout is complete, turn in your evaluations at the Program Office. Pick up medical forms from Health Services.

Health and Safety

The Health Center is open 24 hours a day and is prepared to handle minor injuries and illnesses. Any emergency that cannot be treated at the Health Center will be referred to a local hospital or doctor's clinic. The unit leader or assistant will transport the patient to the outside medical facility. Direction to the hospital:

Every Scout and adult who attend camp **MUST** have an annual health history form completed within the last 12 months prior to attending camp. A copy of your health form will be turned in during check-in at camp.

GRIMES ST. JOSEPH'S HOSPITAL

Located in Navasota at 210 South Judson Avenue, this is the closest hospital to Bovay. The phone number is 936-825-6585. Exit the Camp on County

Road 317 and turn right on Highway 6. Go 3.5 miles to Highway 105. Turn left on Highway 105. Turn left of West Washington Avenue. Travel approximately 6 blocks and turn left on Judson Avenue.

Insurance

The Council Accident and Sickness insurance plans covers your registered Scouts and adult leaders while at camp (please register parents with your pack as Scout Parents). This coverage does not include SHAC LDS units (LDS units should contact their church for insurance forms for camp). Units not in SHAC are not covered by this policy. They should contact their council office on what information must be brought to camp.

All members of the Sam Houston Area Council packs are covered by Health Special Risk unit insurance. A claim form must accompany each scout is referred to an outside medical facility. This is secondary coverage. If there is no other policy, this will be the primary insurance. LDS units need to bring a copy of their claim form to camp.

“Out of Council” packs must provide proof of accident and sickness insurance upon arrival at camp.

Mail

For parents who may plan to send mail to their Scouts. To insure a Scout receives mail, it would be beneficial to mail letters and packages by Friday of the preceding week. There is no phone available for

Scouts to call out, but if a parent needs to contact a Scout they may call the camp office and a message will be given to the Scout during dinner.

Bovay Scout Ranch

Scout's name and Unit Number
3450 County Road 317
Navasota, Texas
77868

Phones

Telephones for Scout use are not available at camp. If you have an emergency and need to leave a message for a Scout or adult leader, you can leave a message. You are strongly discouraged not to let your scout bring a cell phone to camp. As a courtesy to all of our campers and in respect of the outdoor experience, adult cell phone should be limited to outside program times. The phone number at the Bovay Scout Ranch is 936-825-4120.

Personal Possessions

Camp is an outdoor experience. Personal items such as radios, stereos, TV's, CD players, and MP3 players, Electronic games, etc. should not be brought to camp. In all cases, personal valuables (watches, wallets, money) should not be in the open at camp. It is virtually impossible to provide security for these items. It is recommended that each unit bring a lockable storage container to secure valuables while not in the campsite.

Programs Offered at Camp

Academics and Sports Program

The following Belt Loops and Pins are part of our Summer Resident Camp Program and are also available during the Weekend Family and Pack Outing weekends as Program Enhancements.

Wildlife Conservation Belt Loop and Pin
Weather Pin

Geology Belt Loop and Pin

Collecting Belt Loop

Science Pin

Archery Belt Loop and Pin

BB Belt Loop and Pin

Fishing Belt Loop and Pin

Nutrition Belt Loop and Pin

Languages and Cultures Belt Loop

Bicycle Belt Loop

Astronomy Belt Loop

Campsite Belt Loop and Pin Opportunities

These can be done in the campsite during free time if you desire.

Chess Belt Loop

Astronomy Belt Loop

Badminton Belt Loop and Pin

Baseball Belt Loop and Pin

Softball Belt Loop and Pin

Marbles Belt Loop and Pin

Soccer Belt Loop and Pin

Swimming Belt Loop and Pin

Ultimate Belt Loop and Pin

Volleyball Belt Loop and Pin

Program Advancements for All Cub Scout Ranks

6 areas of focus

Nature Center and Oil Derrick
Lost Mine
Fort Blue Bell
BMX/Sportsfield
Paddlewheeler
Indian Village

Nature Center- Character Connection Respect

Wildlife Conservation Belt Loop
Wildlife Conservation Pin (1, 3, 6, 7, 9)
Weather Pin (10, 12)
Tiger Achievement 5 F,D,G; Electives
30, 31, 32, 34, 47
Wolf- Achievement 7 a-f, Elective 15
(a,b,c,d,e)
World Conservation Award
Bear Achievement 6a,b; Elective 14 a-
d, 15 a, b, d, e
Webelos-- Forester (1,3,4,6,8)
Naturalist (3,4,5,7,13)
Outdoorsman (1,2,5,6)

Lost Mine- Character Connection Positive Attitude

Achievements worked on at the Lost
Mine:
Geology Belt Loop and Pin
Collecting Belt Loop
Science Pin
Tiger Elective 16
Wolf Elective 23 b,c and Achievement
6 b,c
Bear Achievement 12 e, Elective 22b,
15 a,b,d

Webelos Geologist (1,2,7,8,9)

Fort Blue Bell: Character Connection Honesty

BB belt loop and pin
Fishing Belt Loop and Pin
Tiger- Elective 29, Elective 41
Wolves- Fishing Elective 19 a,b,c,d,e,f,
Bears- Achievement 12d, Elective 20f
Webelos-

Paddlewheeler (flags and cooking)- Character Connection Perseverance

Nutrition Belt Loop
Nutrition Pin (1, 2, 4, 5, 10,11)
Make a model
Tigers- Rain gutter Regatta
Wolves- Achievement (8 a, b, e)
Bears- Achievement 4 (a,b,c) Elective
5c, a
Webelos- Outdoorsman 8,

Indian Village- Character Connection Faith

Language and Cultures Belt Loop
Tigers Elective 35
Wolves Elective 10 a,d,e,f
Bears Achievement 9 g, Elective 20a
Elective 24 a,b,c
Webelos- Craftsman (leather working,
pottery)

BMX/Sportsfield/ Swimming- Character Connection Health and Fitness

Bicycle Belt Loop and Pin (2,3,5,7,10)
Tigers Elective 37
Wolves Achievement 9 a,d,e
Bears Achievement 14 a,b,c,d 19
a,b,c,d
Webelos- Sportsman

Standards on Advancement

All scouts are responsible to have their passports stamped at each station to have a record to take back their Pack Advancement Chairs.

The Staff at the Bovay Scout Ranch truly believes in doing your best. All a scout has to do is try. Advancement is not withheld from a scout who is truly trying.

We have a lot of achievements, electives, belt loops, pins and extra awards. There are several sessions of camp when these will be offered, but they will only be offered once during camp. If you chose to skip a session with your scouts, know they will not receive that instruction again while you are there.

Specialized Achievements, Awards, Activities and Things to do

Whittling Chip- This award can be earned by any Scout, though the original intent was for Bears and Webelos. Parents must carry their Scout's pocketknives at all times until they have earned this award, and even then it is a parent decision whether or not to allow the child to carry a knife.

Leave No Trace- We will be practicing this at all times during camp. There are specific requirements for each rank.

Cub Scout Outdoor Activity Award- Cub Scouts at all levels from Tiger to Webelos can earn the Outdoor Activity Award. When the award is first earned, the scout receives the pocket flap award, worn on the right pocket flap of his uniform. In each additional year that he earns the award, a wolf track pin is attached to the flap. Successive years should build on skills and experiences from earlier years, having the scouts participate in more extensive activities. The Summertime Pack Award pin should be pinned through this patch just like the wolf track pins.

Sports Field- This program area will have different sports at different times of the day outside of the program times. Check your campsite schedule for more specifics.

Water Park- FREE SWIM is the name of the game. So stay alert for times and days while you are at camp.

Bicycles- During your stay you might want to take a stroll around camp. Personal bicycles are allowed. Just follow the safety guidelines and always wear your helmet.

Hiking- If you and your family enjoy a leisurely stroll, join us for the Sunrise or sunset hikes. This hikes will take you around some of the behind-the-scenes beauty at the Bovay Scout Ranch.

Religious Services- A Scout is reverent. Join us before breakfast each day at 7

a.m. as we enjoy the general splendor and start the morning in a peaceful manner.

Morning Activities

Colonneh Lodge Chapel

Nestled right by the serenity of Lake George and overlooking the peaceful camp, is the Colonneh Lodge Order of the Arrow chapel. An Inter-faith service is held each morning at the chapel. Religious services are conducted by our Camp Chaplain and Camp Director. Any scouts or leaders who would like to participate, contact the Camp Chaplain, Malcolm Gee or the Camp Director Brandylee Marsh. Our staff comes from all religious backgrounds and are excited to share with you how we each live out the calling to be reverent in our lives. We invite you to start your day with peace and tranquility by attending morning services.

CHAPEL IS AT 7:00 AM EVERY MORNING

Evening Activities

1st Night- After dinner, feel free to take a dip in the pool, go to ranges for a jump start on archery and BB shooting, take a Sunset Hike or go to the sports field for a friendly game of kickball. Then it's off to the Staff led campfire. Join us for a fun filled evening with skits and songs put on by your Staff.

2nd Night- After dinner, feel free to take a dip in the pool, go to ranges for a jump start on archery and BB shooting, take a Sunset Hike or go to the sports field for a friendly game of kickball. Then come inside for the Board Game Olympics. Do you have what it takes to win at Checkers, Mancala, Backgammon, Chutes and Ladders, Candyland, Dominoes, Sorry, Uno and Yahtzee? A Champion will be named!! Ok it'll probably be a bunch of champions, cause it's camp and suppose to FUN!! We will finish the evening off with an Astronomy lesson.

Last Night- Join us for our closing Campfire. Scouts may do their own skits if approved by the Program Director. We will close with a patriotic slide show and Camp Awards.

For all evening activities, please be on time. Lights out will be strictly enforced and is at 9:00 pm or 9:30 pm depending on the night. Please check your schedule for exact times.



Trading Post

We are excited to introduce new items and Program connections in the Trading Post. On your first day of camp, you purchase our brandable mugs for \$4.50 and \$5.00 for glow-in-the-dark.

This is one day only pricing.

For the first time, scouts may purchase program enhancing items at the Trading Post. For the Indian Village, arrows, leather, and lacing may be purchased to expand a scout's experience. For the Lost Mine, rocks, minerals, and hard hats are available .

Buy a caged necklace to put your rocks in and wear them for all the see! If your scout scores a bull's eye at one of the ranges, take your certificate to the Trading Post and purchase your Bull's Eye only necklaces. For the Paddlewheeler, get your knots and lashings kits.

There's plenty of Bovay Brewed Root Beer to go around. Drinks and other snacks are also available to purchase

Additionally, you may purchase speciality t-shirts adult camp shirts, white and pink camp shirts, hats, vinyl stickers, necklace kits, and more.

The Trading Post accepts cash, checks, credit cards (Master Card, Visa, American Express and Discover) for your convenience.

Special Fees

Cots may be rented for a cost of \$5.00. If you did not already reserve one, your campsite will help you and you will have to pay at the Trading Post.

What to Bring

What Each Scout Should (and Should NOT) Bring to Camp

Mark all items with first and last name and unit number.

Copy of Medical form **signed by parent.**

Copy of Health Insurance Card- front and back

Clothing Items:

Scout Field Uniform

Scout Activity Uniform

Light Jacket

Rain gear

Hat

Long pants

Underwear

T-shirts

Sturdy, closed toed shoes or boots

Socks

Shoes you can wet

Swim suit and towel

Camping Gear:

Sleeping bag or blankets

Cot, pad, or air mattress

Foot locker with lock

Flashlight with extra batteries

Sunscreen

Water bottle or cup

Toilet Kits:

Toothbrush & Toothpaste
Bath Towel & wash cloth
Soap and Shampoo
Deodorant
Comb/brush

Suggested Extra:

Sunglasses
Camera & film
Insect repellent
Travel alarm
Spending Money

Book of Faith

Cub Scout Handbook

Prohibited Items:

Hunting and sheath knives
Fireworks
Firearms/ammo
Candles or any lighting devices
with an open flame
Skateboards & scooters
Pets

Registration Information

Cub Scout Camping

Did you know there are different types of Cub Scout Camping? There are 4 types of camping available for Cub Scouts- Pack camping, Council Organized Weekend Family Camping, Day Camping, and Resident Camping. We offer 3 of these currently here at the Bovay Scout Ranch

Weekend Family Camping

Join us on one of our many weekends and relax and enjoy one of the many programs we have to offer with our wonderful staff.

In the Fall, come and experience Project WILD segments, use the ranges and the Nature Center. The Bluebonnet stomp happens in October, along with the Great Pumpkin Harvest. We need lots of people to help us keep up the gardens in our Bovay Community Garden.

During the Spring, dig deeper into Cub Scouting with the Nature Watch program. We will explore Pioneering, Dinosaurs, Fossils and Archeology, and Animal Skulls. Work in the garden and take your family photos in the Bluebonnet Field behind the Nature Center. The cost for Weekend Family Camping is \$40 a person. Tents and cots are available to rent.

Pack Outings

Pay \$2 per person and camp at Bovay. You can provide your own program for your pack or pick out one of

our many Programs to use. Fees range from free to \$5.00 per scout.

Nature Watch, Bats, Birds, Butterflies, Ecology/Going Green, Geology/Earth Science, Life Cycles, Insects/ Spiders, Mammals, Native Americans, Nature Exploration, Outdoor Living Skills, Owls, Pirates, Rain forests, Reptiles and Amphibians, Science Exploration, Space and Astronomy, Trees, Plants and Seeds, and Weather.

You may also choose to spend the day exploring our site-specific programs. With access to our Indian Village, Lost Mine, Paddlewheeler, Fort Blue Bell, Sports field, Nature Center, Oil Derrick, and Dino Dig, you can enjoy programs that come complete with crafts examples, meals, songs, skits, fun facts, and pack ceremonies. Programs and locations are available to packs on a first come, first serve basis.

Resident Camping

The pinnacle of Cub Scout camping in the Sam Houston Area Council. Come and spend a session with us. Expand your experience at Day Camp here as we Dig Deeper into all the wonders of Cub Scouting.

Cub Scouts and their leaders spend three nights with us. There are campfires, staff, and FUN galore for Cub Scouts at Resident Camp.

CUB SCOUTS CAMPING GUIDELINES

Sam Houston Area Council

Cub Scouting and the out-of-doors – a winning combination for a successful Pack program! The Cub Scout outdoor program is designed to provide boys and their families with experiences that are an ever-increasing challenge as they progress through the Cub Scout program. Packs in the Sam Houston Area Council are encouraged to make overnight camping experiences a part of their annual program plan according to the following guidelines:

Pack Overnights are overnight camping events that are planned, organized, and run by the members of an individual Pack.

- Conducted at Cub World or the Bovay Scout Ranch (make reservation through Support Service) or a council-approved location (file a Tour Planning Worksheet and “Site Approval Standards for Pack Overnights.”)
- All Pack members (including Tiger Cubs) and family members may attend. Each child should be under the supervision of his/her own parent or guardian.
- **One adult from the Pack, who will attend and give leadership to the Pack overnights, must complete Basic Adult Leader Outdoor Orientation (BALOO).**

Council-Organized Family Camping is a fee-based overnight camping event for which the council provides staffing, food service, and program.

- Conducted at McNair Cub Adventure Camp at Bovay Scout Ranch.
- Packs, dens, or individual families (including Tiger Cub families) may make reservations. Contact Bovay registrar for reservations.

- All family members may attend. Each child should be under the supervision of his/her parent or guardian.

Cub Scout/Webelos Scout Resident Camp is a three-day, two-night summertime program organized by the council.

- Conducted at McNair Cub Adventure Camp at Bovay Scout Ranch.
- Packs, dens, or individual families (including Tiger Cub families) may make reservations. Contact Bovay registrar for reservations.

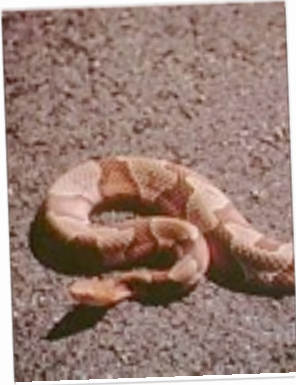
Webelos Den Overnight Camping

- Conducted by Webelos den leadership at a council camp (make reservations through the appropriate council office) or a council-approved site (file Tour Planning Worksheet).
- Webelos dens may reserve council camping facilities at Cub World (Camp Strake), McNair Cub Adventure Camp (Bovay Scout Ranch), or Camp Brosig.
- Webelos dens are encouraged to camp with Troops, but should do so only at times when the den is the focus of the Troop activity. Webelos Scout dens should not spend the night at Boy Scout-based events such as camporees.
- Each Webelos Scout should be under the supervision of a specific adult, in most cases his parent or guardian, even when participating in overnight activities with a Troop.

NOTE: Tiger Cub and Cub Scout dens are not authorized to camp as a den unit except for resident camp or a council-organized family camping event conducted at McNair Cub Adventure Camp.

• It is the intent of Sam Houston Area Council that Cub Scout camping activities have a high degree of parental involvement. General rule of thumb for the Sam Houston Area Council is currently 75% of the Scouts in attendance must have at least one parent in attendance at any Cub Scout camping activity.

Wildlife and Plant Guide



Copperhead snake



Rattlesnakes



Cottonmouth or water
moccasin



Coral snake



Poison Ivy



Poison Sumac



Huisache



Bull nettle



Osage Orange

Animals to watch for



Texas Brown Tarantula



Brown Recluse



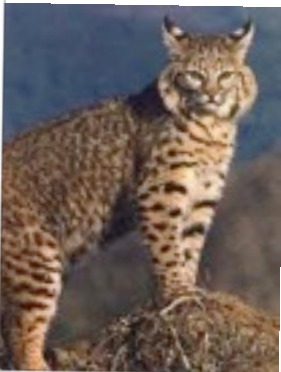
Garden Spiders



Mountain Lion



June Bug



Bobcat



Pill Bugs



Coyotes

Bovay Scout Ranch Planning Schedule

August - January

- ✓ Complete and turn in reservation form. Make sure you fill this form out completely with child's t-shirt size, number of tents needed and number of cots ordered.

February - April

- ✓ Forward roster with initial payment.

May-June 10

- ✓ Adjust roster and make final payment.

2 Weeks Before

- ✓ Collect all youth and leader completed medical forms. You must turn these in upon arrival. Make sure medical forms for youth have a parent signature. Copies can be downloaded at: www.samhoustonbsa.org
- ✓ Verify that all fees have been paid.
- ✓ Send in all Youth Camp in Compliance Forms

2 Days Before

- ✓ Recheck to see that all paperwork is properly filled out and ready to turn in.
- ✓ Confirm pack attendance.

Day of Departure

- ✓ Inspect boy's personal gear to make sure they have packed what is needed.
- ✓ Make sure you bring any extra items asked for by the Camp.
- ✓

In 2011, bring a bag of soil for the garden and Pop Tops for the Ronald McDonald House.

Health Check Procedures

- 📍 Health checks will be done as soon as possible upon arrival to camp.
 - 📍 Unit leader/parent must fill out the Health Inventory prior to arriving at the health station.
 - 📍 Medical records will be checked for completeness, alphabetized, and kept by the health office while in camp.
 - 📍 Health officer will check the Health Inventory and file with pack forms.
 - 📍 Health officer will check the boys and adults in camp.
- 📍 Points to check (conducted by parent/leader, then health officer)
 - 📍 Check each boy listed on inventory as having recent illness, sick on day of arrival, or sick with skin rash, fever, or cough.
 - 📍 Take time to look at each boy briefly, particularly for skin lesions, boils, athlete's foot, insect bites, etc.
- 📍 Stations (A-where pack waits to visit with health officer, B-where health checks occur and paperwork is checked)
 - 📍 A - Manned by one of the Program Staff.
 - 📍 B - Manned by the camp health officer. Does an individual check of any sick Cub Scout, check skin, throat, nose, ears, feet, rash, etc.

There is no provision for the camp administration to allow a camper to remain in camp without a Class 1 medical form signed by a legal parent/guardian. If a Cub Scout does not have a current health record on file, he will have to

return home at his expense to acquire the completed form.

A Cub Scout who comes to camp with an illness or condition that will endanger himself or others while at camp will be sent home. The Sam Houston Area Council will not be responsible for treating illnesses incurred by Cub Scouts prior to their arrival at camp.

Rules, Regulations, Safety Tips & Other Stuff

Bovay Scout Ranch Fireguard Plan
Flammability Warning Camping
Safety Rules

No tent material is fire proof and it can burn when exposed to heat or fire!

Follow these rules:

- 🔔 **NO** flames in or around the tents is a rule which must be enforced. Only flashlights and battery operated lanterns are permitted in tents.
- 🔔 Bovay operates under a policy that campfires may be permitted in the campsites. A fire barrel and two fire buckets with water will be placed in each campsite. These are the only places where campfires may be started in the campsite.
- 🔔 **DO NOT** use flammable chemicals near tents: charcoal lighter, spray cans of paint or bug killer and repellent.
- 🔔 **DO NOT** use electricity in the tents as light bulbs could overheat the tent material causing a fire.

- 🔔 Obey all fire laws, ordinances and regulations.

Please remember that all campfires are subject to following the specific guidelines of the regulated fire ban watches or warnings.

Your camp staff will inform you on the details.

In Case of Fire

Camp Management and the Navasota Fire Department make these suggested procedures recommendations.

In a Campsite

- 🔔 Sound alarm by yelling "FIRE" and notify Camp Management immediately.
- 🔔 Because of the age of Cub Scouts, it is not recommended that any fire fighting take place.
- 🔔 Move Cubs and family members to a safe location away from fire danger, usually in the parking lot in front of the campsite.
- 🔔 The central alarm will be sounded (siren blown continuously for 3 minutes) to warn camp.
- 🔔 Camp Staff personnel will be dispatched to your campsite with a radio to receive further instructions.
- 🔔 Be prepared to mobilize to a safe location.
- 🔔 Local fire authorities will be called to fight the fire.

- 🔔 3 short blasts of the siren will signal the all clear.
- 🔔 A radio announcement will also communicate the all clear.

Outside a Campsite

- 🔔 If you discover a fire anywhere in camp, report immediately to camp headquarters so the alarm may be sounded and fire authorities notified.
- 🔔 When Camp management sounds the central alarm (siren blown continuously for 3 minutes), the local Fire Department will be called by Camp Management to fight the fire.
- 🔔 3 Short blasts will signal the all clear.
- 🔔 A radio announcement will also be made to signal the all clear.

Fight the Fire

- ❖ Camp staff member trained in fire fighting will be the emergency response team manning the camp fire equipment assigned to them. They will make the initial fire attack until the Navasota Fire Department arrives on scene (about 8 minutes).

Campfires In Camp

- 🔔 Fires are only permitted in fire pit provided by camp in campsite.

- 🔔 Do not cut down any trees or brush.
- 🔔 You can bring your own wood or charcoal but if needed there will be wood and charcoal for sale at the Trader Vic's. If you do not use your wood, take it home when you leave camp. Leaving wood for next group will only invite ants to make a nest in it.
- 🔔 A water bucket is supplied for FIRES ONLY in each campsite. Keep it full and close by each time you have a fire. When leaving camp, leave bucket by your campsite water faucet.
- 🔔 Put fires out when you are finished with them. **DO NOT LEAVE UNATTENDED AT ANY TIME!**
- 🔔 **NO LIQUID FUEL!**
- 🔔 When a fire ban is in effect, wood fires are not permitted. Use charcoal only in fire rings.

Bovay Tent Care

For you who have never lived in a tent, you should know:

- 🔔 They cost \$245.00 to replace and the price goes up each year!
- 🔔 No pins; they cause leaks and start rips.
- 🔔 Do not use Duck Tape on flaps because it leaves glue residue.
- 🔔 Running your fingers on wet canvas will break air bubbles and make tents leak.
- 🔔 Dry flaps before rolling to avoid

mildew.

- 📍 Roll flaps toward the inside so they won't become "Gutters".
- 📍 Un-roll flaps periodically.
- 📍 Canvas and ropes shrink when wet, loosen the ropes (guy) at beginning of rain, tighten afterwards (pull ropes evenly on each side).
- 📍 Never hang towels, wet clothes, etc. on guy ropes.
- 📍 Aerosol sprays cause water proofing to not work and canvas to deteriorate. Please do not use sprays in tents.
- 📍 Always close your tent flaps when leaving your campsite; if you don't, it is sure to rain before you return.

These tents are your home and home to many other Scouts during the summer. Please do all that you can to care for them properly and make them livable homes.

Thank you!
Camping Services

Some Camp Rules

- 📍 Don't Do Anything Unsafe!
- 📍 Do not ride or transport people in the back of a pickup or open hatchback car. State law states that everyone has to have a seatbelt.
- 📍 Everyone at a waterfront wears a life jacket on boats, rafts, canoes, and paddle boats.
- 📍 Report any injury to the camp

medical office.

- 📍 Everyone in camp must be listed on a pack camp roster.
- 📍 No scooters, skateboards, skates or in-line skates.
- 📍 Park cars in designated parking areas only. Do not drive onto grass or off the paved roads.
- 📍 No wood fires in campsites when a FIRE BAN is in effect. Charcoal only.
- 📍 Bicycles may be ridden around camp on roadways and gravel paths. DO NOT RIDE ON SIDEWALKS AROUND BUILDINGS OR ON SCOUT PLAZA.
- 📍 Helmets must be worn at all times by youth and adults riding bicycles around camp.
- 📍 No personal bicycles can be used at BMX.

Campsite Information

- 📍 Water coolers are in all the campsites and program areas.
- 📍 All campers will need to police and clean restrooms and showers in their campsites on a daily basis.
- 📍 Sweep all paper and other materials up in restroom and showers and place in trash can in restrooms. Brooms are located in one of the shower stalls in the restroom building.
- 📍 When trash can is full, remove, tie, and place at the road for trash pickup during the day.

New trash bags are in bottom of trash can.

- 🍌 Cleaning kits can be picked up by an adult leader at the Quartermaster area located at the rear of the Headquarters building. Kits contain all items needed to sanitize restrooms and showers, including gloves.
- 🍌 Please return kits to the Quartermaster when you are finished so that kits are available to all campers and to make sure kits can be restocked with the needed items.
- 🍌 Camp Staff will check daily and replace toilet paper, paper towels, and soap as needed.
- 🍌 Trash will be picked up as needed by camp staff and at the end of your stay. Place all trash in barrels provided.

Dining Hall Information

- 🍌 Each campsite is assigned Dining Tables that will remain the same for each meal.
- 🍌 Each Pack will be asked to invite a staff member to eat a meal with your group.
- 🍌 Each Pack is responsible for cleaning their assigned tables.
 - 🍌 Pick up trash.
 - 🍌 Wipe down tables.
 - 🍌 Clean up spills.
 - 🍌 Sweep floors around tables.
 - 🍌 Mop up if needed.
- 🍌 After last meal,
 - 🍌 Wipe down tables and chairs thoroughly.
 - 🍌 Fold chairs and place on top of tables.
 - 🍌 Sweep and mop up spills on floor.

In Case of Severe Thunderstorms or Tornadoes...

🍌 All campers and staff in a program area should move to the nearest building listed below:

- 🍌 Nature Center
- 🍌 Dining Hall
- 🍌 Safari Room
- 🍌 Headquarters Building

All persons in campsites, when threatening weather occurs, should go to the nearest restroom / shower building.

Restroom and Shower Guide

- 🍌 Each campsite is responsible for maintaining the order of their restroom / shower facility while at camp. You can check out a supply bucket form the Quartermaster.
- 🍌 This includes:
 - 🍌 keeping paper towels off floor
 - 🍌 keeping trash in the trash cans
 - 🍌 sweeping out the stalls
 - 🍌 sweeping off the surrounding walkway
- 🍌 Trash from smaller trashcans should be placed in the campsite trash bag and put near the road upon checkout.

PHONES

Telephones for Scout use are not available at camp. If you have an emergency and need to leave a message for a Scout or leader, you can leave a message at the camp administration building. You are strongly discouraged

not to let your Scout bring a cell phone to camp. As a courtesy to all of our campers and in respect of the outdoor experience, adult cell phone use is limited to designated locations.

PERSONAL POSSESSIONS

Camp is an outdoor experience. Personal items such as radios, stereos, TV's, CD players, MP3 players, electronic games, etc. should not be brought to camp. In all cases, personal valuables (watches, wallets, money) should not be in the open at camp. It is virtually impossible to provide security for these items. It is recommended that each unit bring a lockable storage container to secure valuables while not in the campsite.

Forms

Adult Youth Camp in Compliance Form

Health Forms for every member in your unit

Unit Roster complete with number of Adults and Youth with Names

Reservation Form for 2012 (get this form from the Camp Director at Camp)



Character Counts : Building For The Future

